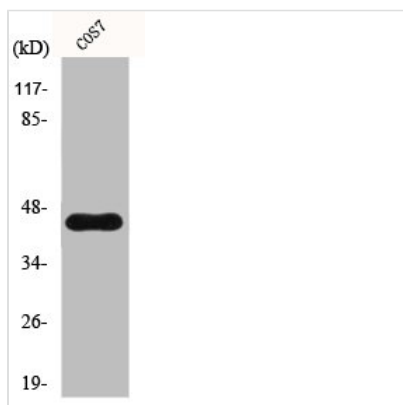




CYTH3 Antibody

Product Code	CSB-PA002833
Storage	Upon receipt, store at -20°C or -80°C. Avoid repeated freeze.
Uniprot No.	O43739
Immunogen	Synthesized peptide derived from the C-terminal region of Human GRP1.
Raised In	Rabbit
Species Reactivity	Human, Mouse, Rat, Monkey
Tested Applications	WB, ELISA; WB:1:500-1:2000, ELISA:1:10000
Form	Liquid
Conjugate	Non-conjugated
Storage Buffer	Liquid in PBS containing 50% glycerol, 0.5% BSA and 0.02% sodium azide.
Purification Method	The antibody was affinity-purified from rabbit antiserum by affinity-chromatography using epitope-specific immunogen.
Isotype	IgG
Alias	CYTH3; ARNO3; GRP1; PSCD3; Cytohesin-3; ARF nucleotide-binding site opener 3; Protein ARNO3; General receptor of phosphoinositides 1; Grp1; PH; SEC7 and coiled-coil domain-containing protein 3
Immunogen Species	Homo sapiens (Human)
Target Names	CYTH3

Image



Western Blot analysis of COS7 cells using GRP1 Polyclonal Antibody

Usage

For Research Use Only. Not for use in diagnostic or therapeutic procedures.