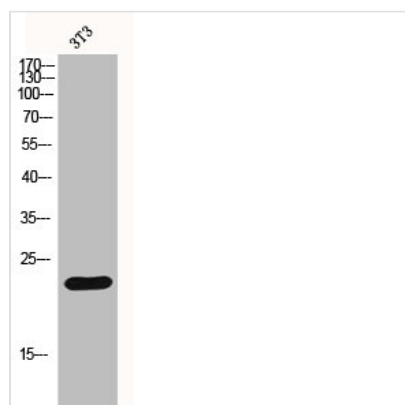




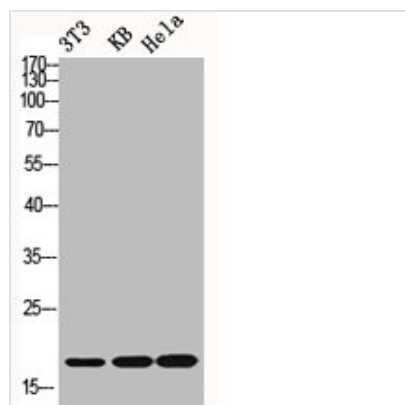
# Histone H1 Antibody

<b>Product Code</b>	CSB-PA002919
<b>Storage</b>	Upon receipt, store at -20°C or -80°C. Avoid repeated freeze.
<b>Uniprot No.</b>	P16401/P16402/P10412
<b>Immunogen</b>	Synthesized peptide derived from Human Histone H1 around the non-phosphorylation site of T17.
<b>Raised In</b>	Rabbit
<b>Species Reactivity</b>	Human, Mouse
<b>Tested Applications</b>	WB, IHC, IF, ELISA; WB:1:500-1:2000, IHC:1:100-1:300, IF:1:200-1:1000, ELISA:1:20000
<b>Form</b>	Liquid
<b>Conjugate</b>	Non-conjugated
<b>Storage Buffer</b>	Liquid in PBS containing 50% glycerol, 0.5% BSA and 0.02% sodium azide.
<b>Purification Method</b>	The antibody was affinity-purified from rabbit antiserum by affinity-chromatography using epitope-specific immunogen.
<b>Isotype</b>	IgG
<b>Alias</b>	HIST1H1B; H1F5; Histone H1.5; Histone H1a; Histone H1b; Histone H1s-3; HIST1H1D; H1F3; Histone H1.3; Histone H1c; Histone H1s-2; HIST1H1E; H1F4; Histone H1.4; Histone H1b; Histone H1s-4
<b>Immunogen Species</b>	Homo sapiens (Human)
<b>Target Names</b>	HIST1H1B/HIST1H1D/HIST1H1E

## Image



Western Blot analysis of 3T3 cells using Histone H1 Polyclonal Antibody



Western Blot analysis of NIH-3T3 KB Hela cells using Histone H1 Polyclonal Antibody