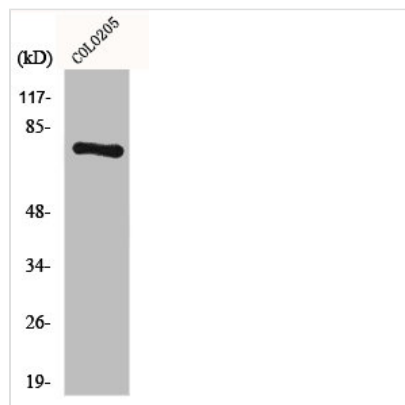




HLX Antibody

Product Code	CSB-PA002936
Storage	Upon receipt, store at -20°C or -80°C. Avoid repeated freeze.
Uniprot No.	Q14774
Immunogen	Synthesized peptide derived from the C-terminal region of Human HLX1.
Raised In	Rabbit
Species Reactivity	Human,Mouse,Rat
Tested Applications	WB, IHC, IF, ELISA; WB:1:500-1:2000, IHC:1:100-1:300, IF:1:200-1:1000, ELISA:1:10000
Form	Liquid
Conjugate	Non-conjugated
Storage Buffer	Liquid in PBS containing 50% glycerol, 0.5% BSA and 0.02% sodium azide.
Purification Method	The antibody was affinity-purified from rabbit antiserum by affinity-chromatography using epitope-specific immunogen.
Isotype	IgG
Alias	HLX; HLX1; H2.0-like homeobox protein; Homeobox protein HB24; Homeobox protein HLX1
Immunogen Species	Homo sapiens (Human)
Target Names	HLX

Image



Western Blot analysis of COLO205 cells using HLX1 Polyclonal Antibody