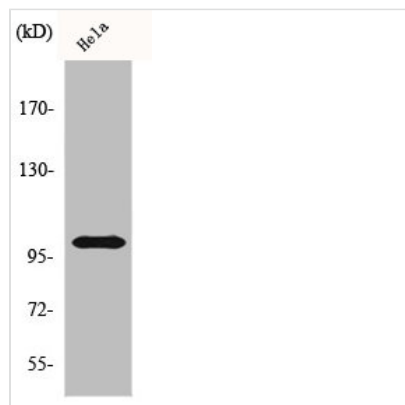




HSPH1 Antibody

Product Code	CSB-PA002984
Storage	Upon receipt, store at -20°C or -80°C. Avoid repeated freeze.
Uniprot No.	Q92598
Immunogen	Synthesized peptide derived from the C-terminal region of Human HSP105.
Raised In	Rabbit
Species Reactivity	Human, Mouse
Tested Applications	WB, IHC, IF, ELISA; WB:1:500-1:2000, IHC:1:100-1:300, IF:1:200-1:1000, ELISA:1:10000
Form	Liquid
Conjugate	Non-conjugated
Storage Buffer	Liquid in PBS containing 50% glycerol, 0.5% BSA and 0.02% sodium azide.
Purification Method	The antibody was affinity-purified from rabbit antiserum by affinity-chromatography using epitope-specific immunogen.
Isotype	IgG
Alias	HSPH1; HSP105; HSP110; KIAA0201; Heat shock protein 105 kDa; Antigen NY-CO-25; Heat shock 110 kDa protein
Immunogen Species	Homo sapiens (Human)
Target Names	HSPH1

Image



Western Blot analysis of HeLa cells using HSP105 Polyclonal Antibody

Usage For Research Use Only. Not for use in diagnostic or therapeutic procedures.