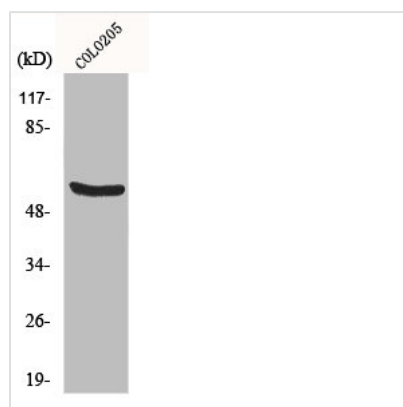




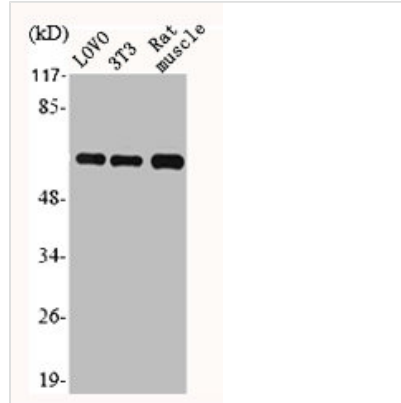
HSPD1 Antibody

Product Code	CSB-PA002990
Storage	Upon receipt, store at -20°C or -80°C. Avoid repeated freeze.
Uniprot No.	P10809
Immunogen	Synthesized peptide derived from the C-terminal region of Human HSP60.
Raised In	Rabbit
Species Reactivity	Human,Mouse,Rat
Tested Applications	WB, IHC, IF, ELISA; WB:1:500-1:2000, IHC:1:100-1:300, IF:1:200-1:1000, ELISA:1:10000
Form	Liquid
Conjugate	Non-conjugated
Storage Buffer	Liquid in PBS containing 50% glycerol, 0.5% BSA and 0.02% sodium azide.
Purification Method	The antibody was affinity-purified from rabbit antiserum by affinity-chromatography using epitope-specific immunogen.
Isotype	IgG
Alias	HSPD1; HSP60; 60 kDa heat shock protein; mitochondrial; 60 kDa chaperonin; Chaperonin 60; CPN60; Heat shock protein 60; HSP-60; Hsp60; HuCHA60; Mitochondrial matrix protein P1; P60 lymphocyte protein
Immunogen Species	Homo sapiens (Human)
Target Names	HSPD1

Image



Western Blot analysis of COLO205 cells using HSP60 Polyclonal Antibody



Western Blot analysis of LOVO NIH-3T3 RAT-MUSCLE cells using HSP60 Polyclonal Antibody

Usage

For Research Use Only. Not for use in diagnostic or therapeutic procedures.