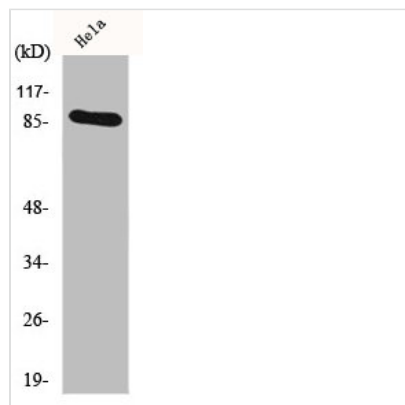




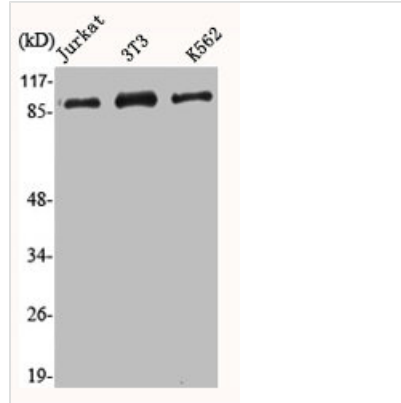
HSP90AA1 Antibody

Product Code	CSB-PA002992
Storage	Upon receipt, store at -20°C or -80°C. Avoid repeated freeze.
Uniprot No.	P07900
Immunogen	Synthesized peptide derived from the C-terminal region of Human HSP90A.
Raised In	Rabbit
Species Reactivity	Human, Mouse, Rat
Tested Applications	WB, IHC, IF, ELISA; WB:1:500-1:2000, IHC:1:100-1:300, IF:1:200-1:1000, ELISA:1:40000
Form	Liquid
Conjugate	Non-conjugated
Storage Buffer	Liquid in PBS containing 50% glycerol, 0.5% BSA and 0.02% sodium azide.
Purification Method	The antibody was affinity-purified from rabbit antiserum by affinity-chromatography using epitope-specific immunogen.
Isotype	IgG
Alias	HSP90AA1; HSP90A; HSPC1; HSPCA; Heat shock protein HSP 90-alpha; Heat shock 86 kDa; HSP 86; HSP86; Renal carcinoma antigen NY-REN-38
Immunogen Species	Homo sapiens (Human)
Target Names	HSP90AA1

Image



Western Blot analysis of HeLa cells using HSP90A Polyclonal Antibody



Western Blot analysis of Jurkat NIH-3T3 K562 cells using HSP90A Polyclonal Antibody

Usage

For Research Use Only. Not for use in diagnostic or therapeutic procedures.