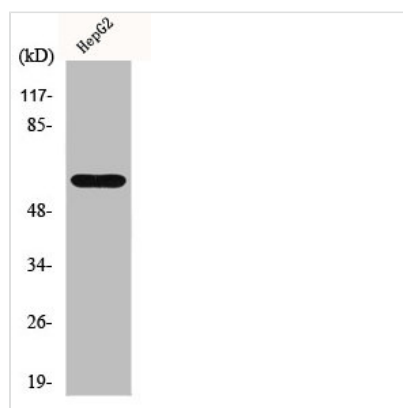




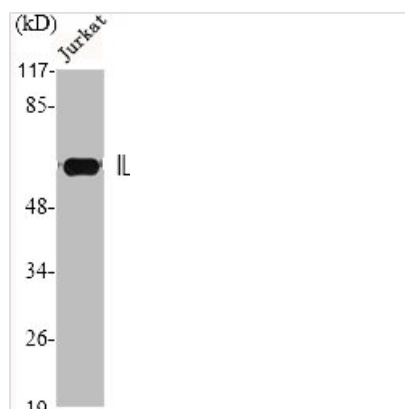
IL20RA Antibody

Product Code	CSB-PA003025
Storage	Upon receipt, store at -20°C or -80°C. Avoid repeated freeze.
Uniprot No.	Q9UHF4
Immunogen	Synthesized peptide derived from the Internal region of Human IL-20R α .
Raised In	Rabbit
Species Reactivity	Human
Tested Applications	WB, IHC, ELISA; WB:1:500-1:2000, IHC:1:100-1:300, ELISA:1:40000
Form	Liquid
Conjugate	Non-conjugated
Storage Buffer	Liquid in PBS containing 50% glycerol, 0.5% BSA and 0.02% sodium azide.
Purification Method	The antibody was affinity-purified from rabbit antiserum by affinity-chromatography using epitope-specific immunogen.
Isotype	IgG
Alias	IL20RA; Interleukin-20 receptor subunit alpha; IL-20 receptor subunit alpha; IL-20R-alpha; IL-20RA; Cytokine receptor class-II member 8; Cytokine receptor family 2 member 8; CRF2-8; IL-20R1; ZcytoR7
Immunogen Species	Homo sapiens (Human)
Target Names	IL20RA

Image



Western Blot analysis of LOVO cells using IL-20R α Polyclonal Antibody



Western Blot analysis of Jurkat cells using
IL-20R α Polyclonal Antibody