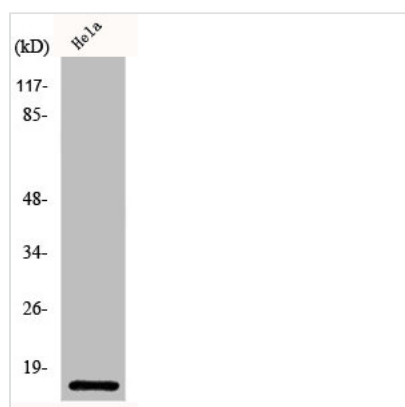




CXCL8 Antibody

Product Code	CSB-PA003036
Storage	Upon receipt, store at -20°C or -80°C. Avoid repeated freeze.
Uniprot No.	P10145
Immunogen	Synthesized peptide derived from the Internal region of Human IL-8.
Raised In	Rabbit
Species Reactivity	Human
Tested Applications	WB, IHC, ELISA; WB:1:500-1:2000, IHC:1:100-1:300, ELISA:1:20000
Form	Liquid
Conjugate	Non-conjugated
Storage Buffer	Liquid in PBS containing 50% glycerol, 0.5% BSA and 0.02% sodium azide.
Purification Method	The antibody was affinity-purified from rabbit antiserum by affinity-chromatography using epitope-specific immunogen.
Isotype	IgG
Alias	IL8; CXCL8; Interleukin-8; IL-8; C-X-C motif chemokine 8; Emotakin; Granulocyte chemotactic protein 1; GCP-1; Monocyte-derived neutrophil chemotactic factor; MDNCF; Monocyte-derived neutrophil-activating peptide; MONAP; Neutrophil-activati
Immunogen Species	Homo sapiens (Human)
Target Names	CXCL8

Image



Western Blot analysis of HeLa cells using IL-8 Polyclonal Antibody