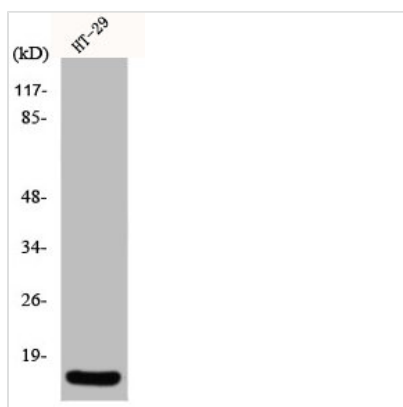




INSL4 Antibody

Product Code	CSB-PA003040
Storage	Upon receipt, store at -20°C or -80°C. Avoid repeated freeze.
Uniprot No.	Q14641
Immunogen	Synthesized peptide derived from the Internal region of Human INSL4.
Raised In	Rabbit
Species Reactivity	Human
Tested Applications	WB, IHC, IF, ELISA; WB:1:500-1:2000, IHC:1:100-1:300, IF:1:200-1:1000, ELISA:1:20000
Form	Liquid
Conjugate	Non-conjugated
Storage Buffer	Liquid in PBS containing 50% glycerol, 0.5% BSA and 0.02% sodium azide.
Purification Method	The antibody was affinity-purified from rabbit antiserum by affinity-chromatography using epitope-specific immunogen.
Isotype	IgG
Alias	INSL4; Early placenta insulin-like peptide; EPIL; Insulin-like peptide 4; Placentin
Immunogen Species	Homo sapiens (Human)
Target Names	INSL4

Image



Western Blot analysis of HT29 cells using INSL4 Polyclonal Antibody

Usage

For Research Use Only. Not for use in diagnostic or therapeutic procedures.