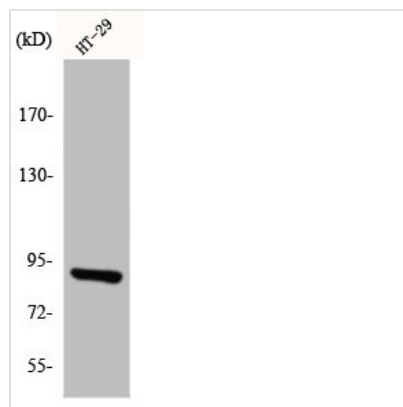




ITPKC Antibody

Product Code	CSB-PA003041
Storage	Upon receipt, store at -20°C or -80°C. Avoid repeated freeze.
Uniprot No.	Q96DU7
Immunogen	Synthesized peptide derived from the Internal region of Human InsP 3-kinase C.
Raised In	Rabbit
Species Reactivity	Human
Tested Applications	WB, IHC, ELISA; WB:1:500-1:2000, IHC:1:100-1:300, ELISA:1:10000
Form	Liquid
Conjugate	Non-conjugated
Storage Buffer	Liquid in PBS containing 50% glycerol, 0.5% BSA and 0.02% sodium azide.
Purification Method	The antibody was affinity-purified from rabbit antiserum by affinity-chromatography using epitope-specific immunogen.
Isotype	IgG
Alias	ITPKC; IP3KC; Inositol-trisphosphate 3-kinase C; Inositol 1; 4,5-trisphosphate 3-kinase C; IP3 3-kinase C; IP3K C; InsP 3-kinase C
Immunogen Species	Homo sapiens (Human)
Target Names	ITPKC

Image



Western Blot analysis of HT29 cells using InsP 3-kinase C Polyclonal Antibody

Usage

For Research Use Only. Not for use in diagnostic or therapeutic procedures.