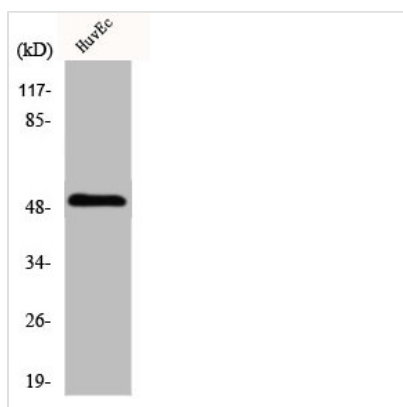




# ITPKA Antibody

|                            |                                                                                                                             |
|----------------------------|-----------------------------------------------------------------------------------------------------------------------------|
| <b>Product Code</b>        | CSB-PA003055                                                                                                                |
| <b>Storage</b>             | Upon receipt, store at -20°C or -80°C. Avoid repeated freeze.                                                               |
| <b>Uniprot No.</b>         | P23677                                                                                                                      |
| <b>Immunogen</b>           | Synthesized peptide derived from the C-terminal region of Human IP3KA.                                                      |
| <b>Raised In</b>           | Rabbit                                                                                                                      |
| <b>Species Reactivity</b>  | Human, Mouse, Rat                                                                                                           |
| <b>Tested Applications</b> | WB, IF, ELISA; WB:1:500-1:2000, IF:1:200-1:1000, ELISA:1:20000                                                              |
| <b>Form</b>                | Liquid                                                                                                                      |
| <b>Conjugate</b>           | Non-conjugated                                                                                                              |
| <b>Storage Buffer</b>      | Liquid in PBS containing 50% glycerol, 0.5% BSA and 0.02% sodium azide.                                                     |
| <b>Purification Method</b> | The antibody was affinity-purified from rabbit antiserum by affinity-chromatography using epitope-specific immunogen.       |
| <b>Isotype</b>             | IgG                                                                                                                         |
| <b>Alias</b>               | ITPKA; Inositol-trisphosphate 3-kinase A; Inositol 1; 4,5-trisphosphate 3-kinase A; IP3 3-kinase A; IP3K A; InsP 3-kinase A |
| <b>Immunogen Species</b>   | Homo sapiens (Human)                                                                                                        |
| <b>Target Names</b>        | ITPKA                                                                                                                       |

## Image



Western Blot analysis of HuvEc cells using ITPKA Polyclonal Antibody

## Usage

For Research Use Only. Not for use in diagnostic or therapeutic procedures.