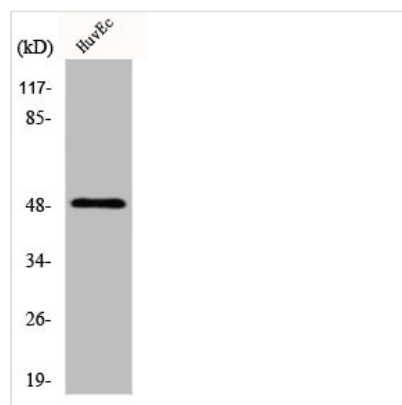




IP6K2 Antibody

Product Code	CSB-PA003056
Storage	Upon receipt, store at -20°C or -80°C. Avoid repeated freeze.
Uniprot No.	Q9UHH9
Immunogen	Synthesized peptide derived from the Internal region of Human IP6K2.
Raised In	Rabbit
Species Reactivity	Human,Mouse,Rat
Tested Applications	WB, IHC, IF, ELISA; WB:1:500-1:2000, IHC:1:100-1:300, IF:1:200-1:1000, ELISA:1:40000
Form	Liquid
Conjugate	Non-conjugated
Storage Buffer	Liquid in PBS containing 50% glycerol, 0.5% BSA and 0.02% sodium azide.
Purification Method	The antibody was affinity-purified from rabbit antiserum by affinity-chromatography using epitope-specific immunogen.
Isotype	IgG
Alias	IP6K2; IHPK2; TCCCIA00113; Inositol hexakisphosphate kinase 2; InsP6 kinase 2; P(i)-uptake stimulator; PiUS
Immunogen Species	Homo sapiens (Human)
Target Names	IP6K2

Image



Western Blot analysis of Jurkat cells using IP6K2 Polyclonal Antibody

Usage For Research Use Only. Not for use in diagnostic or therapeutic procedures.