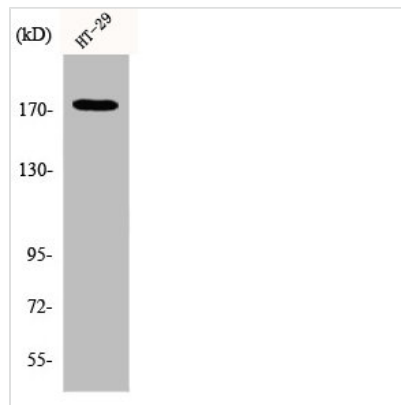




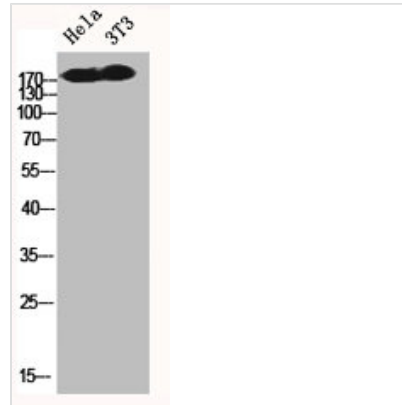
IRS1 Antibody

Product Code	CSB-PA003065
Storage	Upon receipt, store at -20°C or -80°C. Avoid repeated freeze.
Uniprot No.	P35568
Immunogen	Synthesized peptide derived from Human IRS-1 around the non-phosphorylation site of S616.
Raised In	Rabbit
Species Reactivity	Human, Mouse, Rat
Tested Applications	WB, IHC, ELISA; WB:1:500-1:2000, IHC:1:100-1:300, ELISA:1:5000
Form	Liquid
Conjugate	Non-conjugated
Storage Buffer	Liquid in PBS containing 50% glycerol, 0.5% BSA and 0.02% sodium azide.
Purification Method	The antibody was affinity-purified from rabbit antiserum by affinity-chromatography using epitope-specific immunogen.
Isotype	IgG
Alias	IRS1; Insulin receptor substrate 1; IRS-1
Immunogen Species	Homo sapiens (Human)
Target Names	IRS1

Image



Western Blot analysis of HT29 cells using IRS-1 Polyclonal Antibody



Western Blot analysis of HELA NIH-3T3 cells using IRS-1 Polyclonal Antibody