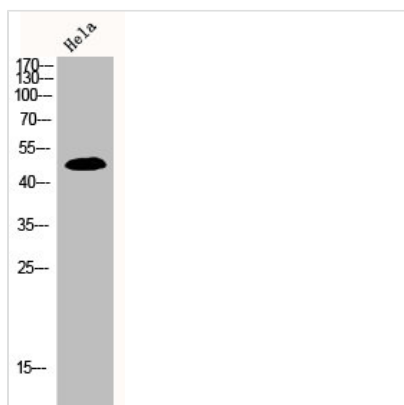




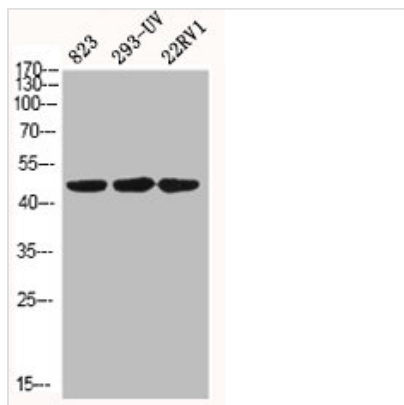
# MAPK8/MAPK9/MAPK10 Antibody

<b>Product Code</b>	CSB-PA003086
<b>Storage</b>	Upon receipt, store at -20°C or -80°C. Avoid repeated freeze.
<b>Uniprot No.</b>	P45983/P45984/P53779
<b>Immunogen</b>	Synthesized peptide derived from Human JNK1/2/3 around the non-phosphorylation site of Y185.
<b>Raised In</b>	Rabbit
<b>Species Reactivity</b>	Human,Mouse,Rat
<b>Tested Applications</b>	WB, IHC, ELISA; WB:1:500-1:2000, IHC:1:100-1:300, ELISA:1:5000
<b>Form</b>	Liquid
<b>Conjugate</b>	Non-conjugated
<b>Storage Buffer</b>	Liquid in PBS containing 50% glycerol, 0.5% BSA and 0.02% sodium azide.
<b>Purification Method</b>	The antibody was affinity-purified from rabbit antiserum by affinity-chromatography using epitope-specific immunogen.
<b>Isotype</b>	IgG
<b>Alias</b>	MAPK8; JNK1; PRKM8; SAPK1; SAPK1C; Mitogen-activated protein kinase 8; MAP kinase 8; MAPK 8; JNK-46; Stress-activated protein kinase 1c; SAPK1c; Stress-activated protein kinase JNK1; c-Jun N-terminal kinase 1; MAPK9; JNK2; PRKM9; SAPK1A; Mi
<b>Immunogen Species</b>	Homo sapiens (Human)
<b>Target Names</b>	MAPK8/MAPK9/MAPK10

## Image



Western Blot analysis of hela cells using JNK1/2/3 Polyclonal Antibody



Western Blot analysis of 823 293-UV 22RV1 cells using JNK1/2/3 Polyclonal Antibody

**Usage**

For Research Use Only. Not for use in diagnostic or therapeutic procedures.