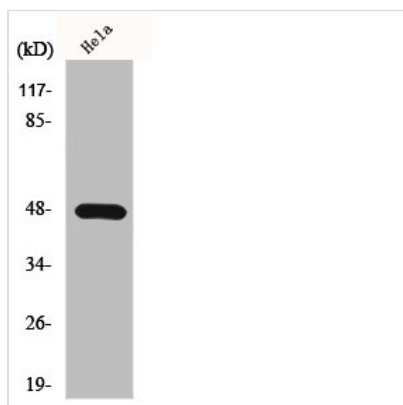




KCNJ2 Antibody

Product Code	CSB-PA003099
Storage	Upon receipt, store at -20°C or -80°C. Avoid repeated freeze.
Uniprot No.	P63252
Immunogen	Synthesized peptide derived from the Internal region of Human KIR2.1.
Raised In	Rabbit
Species Reactivity	Human,Rat
Tested Applications	WB, IHC, ELISA; WB:1:500-1:2000, IHC:1:100-1:300, ELISA:1:10000
Form	Liquid
Conjugate	Non-conjugated
Storage Buffer	Liquid in PBS containing 50% glycerol, 0.5% BSA and 0.02% sodium azide.
Purification Method	The antibody was affinity-purified from rabbit antiserum by affinity-chromatography using epitope-specific immunogen.
Isotype	IgG
Alias	KCNJ2; IRK1; Inward rectifier potassium channel 2; Cardiac inward rectifier potassium channel; Inward rectifier K(+) channel Kir2.1; IRK-1; hIRK1; Potassium channel; inwardly rectifying subfamily J member 2
Immunogen Species	Homo sapiens (Human)
Target Names	KCNJ2

Image



Western Blot analysis of HeLa cells using KIR2.1 Polyclonal Antibody

Usage

For Research Use Only. Not for use in diagnostic or therapeutic procedures.