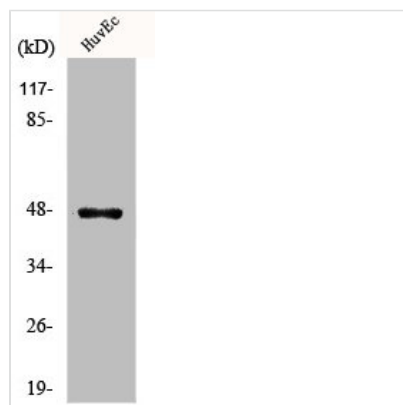




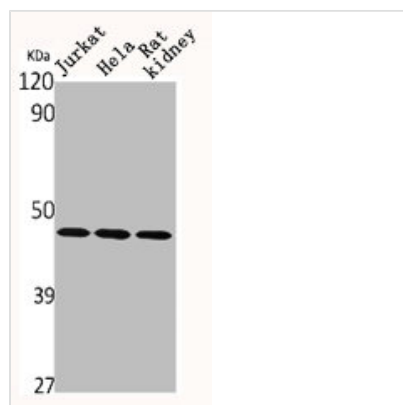
SUV39H2 Antibody

Product Code	CSB-PA003106
Storage	Upon receipt, store at -20°C or -80°C. Avoid repeated freeze.
Uniprot No.	Q9H5I1
Immunogen	Synthesized peptide derived from the Internal region of Human KMT1B.
Raised In	Rabbit
Species Reactivity	Human,Mouse
Tested Applications	WB, ELISA; WB:1:500-1:2000, ELISA:1:40000
Form	Liquid
Conjugate	Non-conjugated
Storage Buffer	Liquid in PBS containing 50% glycerol, 0.5% BSA and 0.02% sodium azide.
Purification Method	The antibody was affinity-purified from rabbit antiserum by affinity-chromatography using epitope-specific immunogen.
Isotype	IgG
Alias	SUV39H2; KMT1B; Histone-lysine N-methyltransferase SUV39H2; Histone H3-K9 methyltransferase 2; H3-K9-HMTase 2; Lysine N-methyltransferase 1B; Suppressor of variegation 3-9 homolog 2; Su(var)3-9 homolog 2
Immunogen Species	Homo sapiens (Human)
Target Names	SUV39H2

Image



Western Blot analysis of COLO205 cells using KMT1B Polyclonal Antibody



Western Blot analysis of Jurkat HELA RAT-KIDNEY cells using KMT1B Polyclonal Antibody