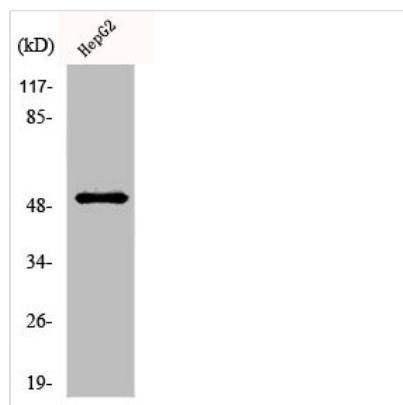




SH2D2A Antibody

Product Code	CSB-PA003129
Storage	Upon receipt, store at -20°C or -80°C. Avoid repeated freeze.
Uniprot No.	Q9NP31
Immunogen	Synthesized peptide derived from the Internal region of Human Lad.
Raised In	Rabbit
Species Reactivity	Human
Tested Applications	WB, IHC, ELISA; WB:1:500-1:2000, IHC:1:100-1:300, ELISA:1:10000
Form	Liquid
Conjugate	Non-conjugated
Storage Buffer	Liquid in PBS containing 50% glycerol, 0.5% BSA and 0.02% sodium azide.
Purification Method	The antibody was affinity-purified from rabbit antiserum by affinity-chromatography using epitope-specific immunogen.
Isotype	IgG
Alias	SH2D2A; SCAP; TSAD; VRAP; SH2 domain-containing protein 2A; SH2 domain-containing adapter protein; T cell-specific adapter protein; TSAd; VEGF receptor-associated protein
Immunogen Species	Homo sapiens (Human)
Target Names	SH2D2A

Image



Western Blot analysis of HepG2 cells using Lad Polyclonal Antibody