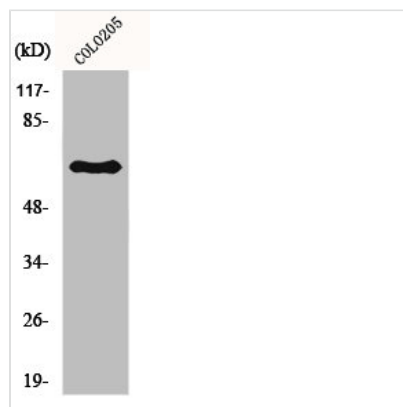




LMNB1 Antibody

Product Code	CSB-PA003133
Storage	Upon receipt, store at -20°C or -80°C. Avoid repeated freeze.
Uniprot No.	P20700
Immunogen	Synthesized peptide derived from the N-terminal region of Human Lamin B1.
Raised In	Rabbit
Species Reactivity	Human,Mouse,Rat
Tested Applications	WB, IHC, ELISA; WB:1:500-1:2000, IHC:1:100-1:300, ELISA:1:40000
Form	Liquid
Conjugate	Non-conjugated
Storage Buffer	Liquid in PBS containing 50% glycerol, 0.5% BSA and 0.02% sodium azide.
Purification Method	The antibody was affinity-purified from rabbit antiserum by affinity-chromatography using epitope-specific immunogen.
Isotype	IgG
Alias	LMNB1; LMN2; LMNB; Lamin-B1
Immunogen Species	Homo sapiens (Human)
Target Names	LMNB1

Image



Western Blot analysis of mouse COLO205 cells using Lamin B1 Polyclonal Antibody

Usage

For Research Use Only. Not for use in diagnostic or therapeutic procedures.