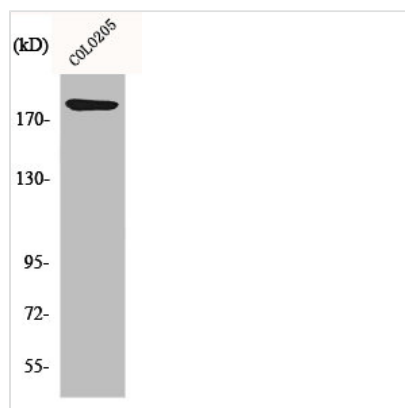




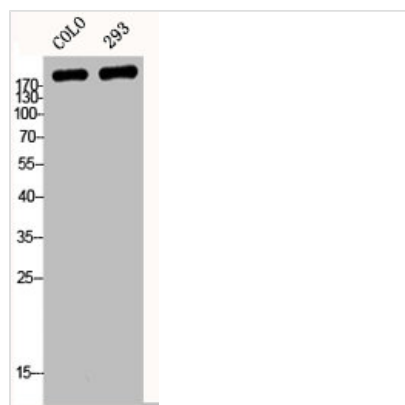
LAMA4 Antibody

Product Code	CSB-PA003134
Storage	Upon receipt, store at -20°C or -80°C. Avoid repeated freeze.
Uniprot No.	Q16363
Immunogen	Synthesized peptide derived from the Internal region of Human Laminin α -4.
Raised In	Rabbit
Species Reactivity	Human, Mouse
Tested Applications	WB, IHC, IF, ELISA; WB:1:500-1:2000, IHC:1:100-1:300, IF:1:200-1:1000, ELISA:1:40000
Form	Liquid
Conjugate	Non-conjugated
Storage Buffer	Liquid in PBS containing 50% glycerol, 0.5% BSA and 0.02% sodium azide.
Purification Method	The antibody was affinity-purified from rabbit antiserum by affinity-chromatography using epitope-specific immunogen.
Isotype	IgG
Alias	LAMA4; Laminin subunit alpha-4; Laminin-14 subunit alpha; Laminin-8 subunit alpha; Laminin-9 subunit alpha
Immunogen Species	Homo sapiens (Human)
Target Names	LAMA4

Image



Western Blot analysis of 293 cells using Laminin α -4 Polyclonal Antibody



Western Blot analysis of COLO 293 cells using
Laminin α -4 Polyclonal Antibody