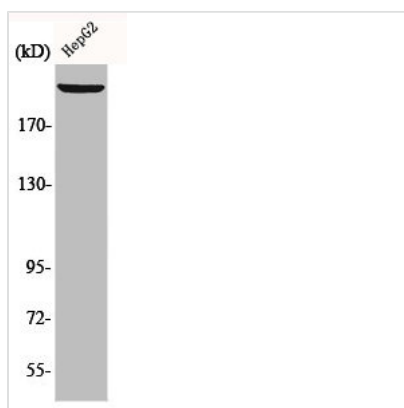




LAMB1 Antibody

Product Code	CSB-PA003135
Storage	Upon receipt, store at -20°C or -80°C. Avoid repeated freeze.
Uniprot No.	P07942
Immunogen	Synthesized peptide derived from the C-terminal region of Human Laminin β -1.
Raised In	Rabbit
Species Reactivity	Human, Mouse
Tested Applications	WB, IHC, IF, ELISA; WB:1:500-1:2000, IHC:1:100-1:300, IF:1:200-1:1000, ELISA:1:10000
Form	Liquid
Conjugate	Non-conjugated
Storage Buffer	Liquid in PBS containing 50% glycerol, 0.5% BSA and 0.02% sodium azide.
Purification Method	The antibody was affinity-purified from rabbit antiserum by affinity-chromatography using epitope-specific immunogen.
Isotype	IgG
Alias	LAMB1; Laminin subunit beta-1; Laminin B1 chain; Laminin-1 subunit beta; Laminin-10 subunit beta; Laminin-12 subunit beta; Laminin-2 subunit beta; Laminin-6 subunit beta; Laminin-8 subunit beta
Immunogen Species	Homo sapiens (Human)
Target Names	LAMB1

Image



Western Blot analysis of HepG2 cells using Laminin β -1 Polyclonal Antibody

Usage For Research Use Only. Not for use in diagnostic or therapeutic procedures.