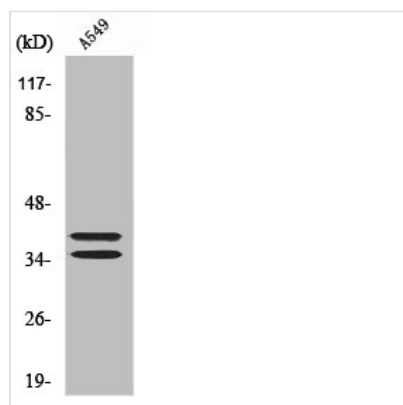




LAT Antibody

Product Code	CSB-PA003140
Storage	Upon receipt, store at -20°C or -80°C. Avoid repeated freeze.
Uniprot No.	O43561
Immunogen	Synthesized peptide derived from Human LAT around the non-phosphorylation site of Y191.
Raised In	Rabbit
Species Reactivity	Human,Mouse,Rat
Tested Applications	WB, ELISA; WB:1:500-1:2000, ELISA:1:5000
Form	Liquid
Conjugate	Non-conjugated
Storage Buffer	Liquid in PBS containing 50% glycerol, 0.5% BSA and 0.02% sodium azide.
Purification Method	The antibody was affinity-purified from rabbit antiserum by affinity-chromatography using epitope-specific immunogen.
Isotype	IgG
Alias	LAT; Linker for activation of T-cells family member 1; 36 kDa phospho-tyrosine adapter protein; pp36; p36-38
Immunogen Species	Homo sapiens (Human)
Target Names	LAT

Image



Western Blot analysis of Jurkat cells using LAT Polyclonal Antibody

Usage For Research Use Only. Not for use in diagnostic or therapeutic procedures.