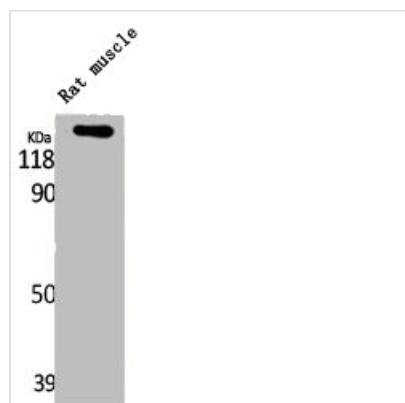




LATS1/LATS2 Antibody

Product Code	CSB-PA003141
Storage	Upon receipt, store at -20°C or -80°C. Avoid repeated freeze.
Uniprot No.	O95835/Q9NRM7
Immunogen	Synthesized peptide derived from Human LATS1/2 around the non-phosphorylation site of T1079/1041.
Raised In	Rabbit
Species Reactivity	Human, Mouse
Tested Applications	WB, IHC, ELISA; IHC:1:100-1:300, ELISA:1:40000
Form	Liquid
Conjugate	Non-conjugated
Storage Buffer	Liquid in PBS containing 50% glycerol, 0.5% BSA and 0.02% sodium azide.
Purification Method	The antibody was affinity-purified from rabbit antiserum by affinity-chromatography using epitope-specific immunogen.
Isotype	IgG
Alias	LATS1; WARTS; Serine/threonine-protein kinase LATS1; Large tumor suppressor homolog 1; WARTS protein kinase; h-warts; LATS2; KPM; Serine/threonine-protein kinase LATS2; Kinase phosphorylated during mitosis protein; Large tumor suppressor ho
Immunogen Species	Homo sapiens (Human)
Target Names	LATS1/LATS2

Image



Western Blot analysis of RAT-MUSCLE cells using LATS1/2 Polyclonal Antibody