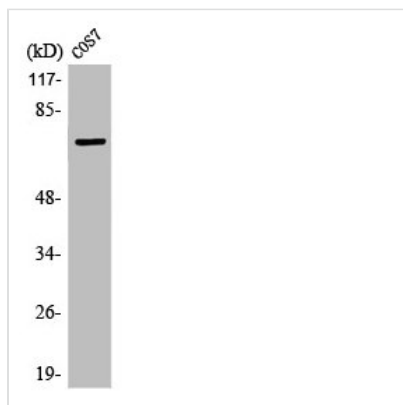




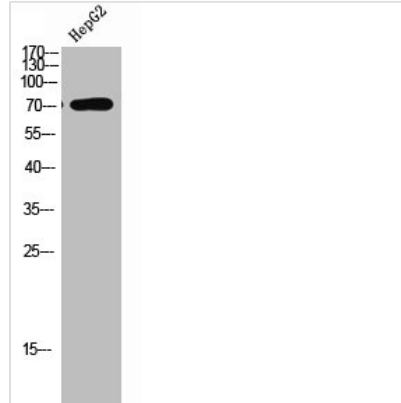
LIMK1/LIMK2 Antibody

Product Code	CSB-PA003151
Storage	Upon receipt, store at -20°C or -80°C. Avoid repeated freeze.
Uniprot No.	P53667/P53671
Immunogen	Synthesized peptide derived from Human LIMK-1/2 around the non-phosphorylation site of T508/505.
Raised In	Rabbit
Species Reactivity	Human, Mouse, Rat, Monkey
Tested Applications	WB, IHC, ELISA; WB:1:500-1:2000, IHC:1:100-1:300, ELISA:1:40000
Form	Liquid
Conjugate	Non-conjugated
Storage Buffer	Liquid in PBS containing 50% glycerol, 0.5% BSA and 0.02% sodium azide.
Purification Method	The antibody was affinity-purified from rabbit antiserum by affinity-chromatography using epitope-specific immunogen.
Isotype	IgG
Alias	LIMK1; LIMK; LIM domain kinase 1; LIMK-1; LIMK2; LIM domain kinase 2; LIMK-2
Immunogen Species	Homo sapiens (Human)
Target Names	LIMK1/LIMK2

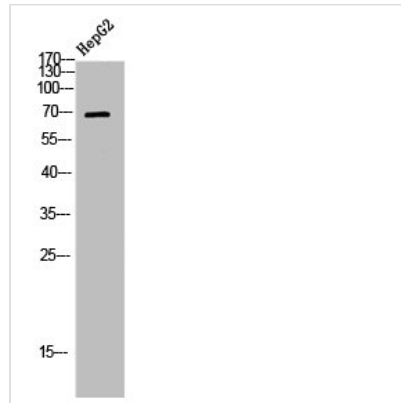
Image



Western Blot analysis of COS7 cells using LIMK-1/2 Polyclonal Antibody



Western Blot analysis of HEPG2 using LIMK-1/2 Polyclonal Antibody.



Western Blot analysis of HEPG2 using LIMK-1/2 Polyclonal Antibody.

Usage

For Research Use Only. Not for use in diagnostic or therapeutic procedures.