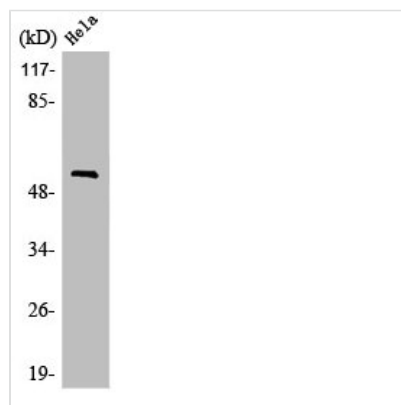




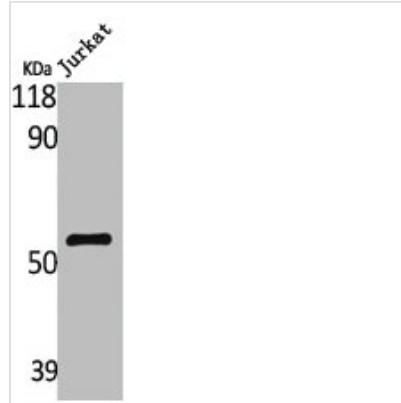
LILRA1 Antibody

Product Code	CSB-PA003154
Storage	Upon receipt, store at -20°C or -80°C. Avoid repeated freeze.
Uniprot No.	O75019
Immunogen	Synthesized peptide derived from the Internal region of Human LIR-6.
Raised In	Rabbit
Species Reactivity	Human
Tested Applications	WB, IF, ELISA; WB:1:500-1:2000, IF:1:200-1:1000, ELISA:1:20000
Form	Liquid
Conjugate	Non-conjugated
Storage Buffer	Liquid in PBS containing 50% glycerol, 0.5% BSA and 0.02% sodium azide.
Purification Method	The antibody was affinity-purified from rabbit antiserum by affinity-chromatography using epitope-specific immunogen.
Isotype	IgG
Alias	LILRA1; LIR6; Leukocyte immunoglobulin-like receptor subfamily A member 1; CD85 antigen-like family member I; Leukocyte immunoglobulin-like receptor 6; LIR-6; CD antigen CD85i
Immunogen Species	Homo sapiens (Human)
Target Names	LILRA1

Image



Western Blot analysis of MCF7 cells using LIR-6 Polyclonal Antibody



Western Blot analysis of Jurkat cells using LIR-6 Polyclonal Antibody