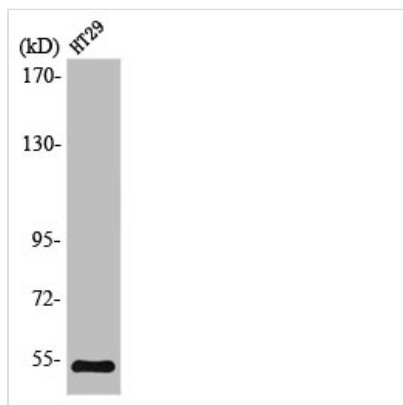




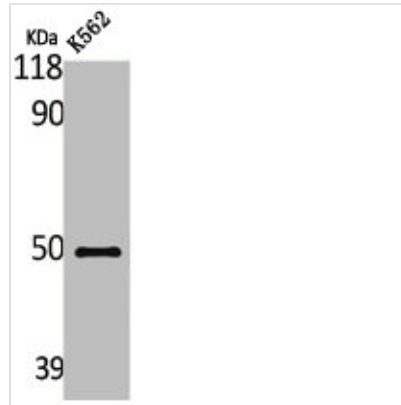
STK11 Antibody

Product Code	CSB-PA003157
Storage	Upon receipt, store at -20°C or -80°C. Avoid repeated freeze.
Uniprot No.	Q15831
Immunogen	Synthesized peptide derived from Human LKB1 around the non-phosphorylation site of S334.
Raised In	Rabbit
Species Reactivity	Human, Mouse
Tested Applications	WB, ELISA; WB:1:500-1:2000, ELISA:1:20000
Form	Liquid
Conjugate	Non-conjugated
Storage Buffer	Liquid in PBS containing 50% glycerol, 0.5% BSA and 0.02% sodium azide.
Purification Method	The antibody was affinity-purified from rabbit antiserum by affinity-chromatography using epitope-specific immunogen.
Isotype	IgG
Alias	STK11; LKB1; PJS; Serine/threonine-protein kinase STK11; Liver kinase B1; LKB1; hLKB1; Renal carcinoma antigen NY-REN-19
Immunogen Species	Homo sapiens (Human)
Target Names	STK11

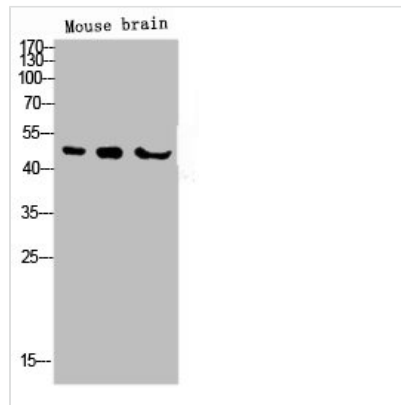
Image



Western Blot analysis of HT29 cells using LKB1 Polyclonal Antibody



Western Blot analysis of K562 cells using LKB1 Polyclonal Antibody



Western blot analysis of KB 3T3 Hela lysis using LKB1 antibody.

Usage

For Research Use Only. Not for use in diagnostic or therapeutic procedures.