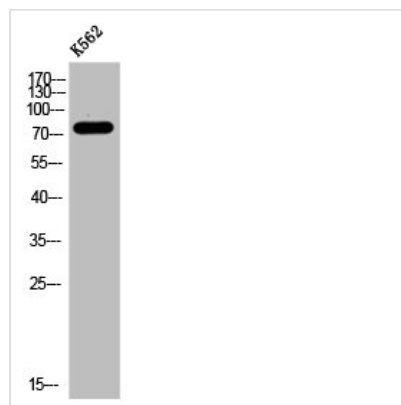




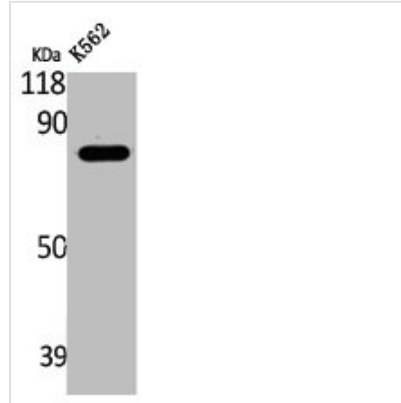
LRRC41 Antibody

Product Code	CSB-PA003167
Storage	Upon receipt, store at -20°C or -80°C. Avoid repeated freeze.
Uniprot No.	Q15345
Immunogen	Synthesized peptide derived from the Internal region of Human LRRC41.
Raised In	Rabbit
Species Reactivity	Human,Mouse,Rat
Tested Applications	WB, IHC, ELISA; WB:1:500-1:2000, IHC:1:100-1:300, ELISA:1:5000
Form	Liquid
Conjugate	Non-conjugated
Storage Buffer	Liquid in PBS containing 50% glycerol, 0.5% BSA and 0.02% sodium azide.
Purification Method	The antibody was affinity-purified from rabbit antiserum by affinity-chromatography using epitope-specific immunogen.
Isotype	IgG
Alias	LRRC41; MUF1; PP7759; Leucine-rich repeat-containing protein 41; Protein Muf1
Immunogen Species	Homo sapiens (Human)
Target Names	LRRC41

Image



Western Blot analysis of K562 cells using LRRC41 Polyclonal Antibody



Western Blot analysis of K562 cells using LRRC41 Polyclonal Antibody

Usage

For Research Use Only. Not for use in diagnostic or therapeutic procedures.