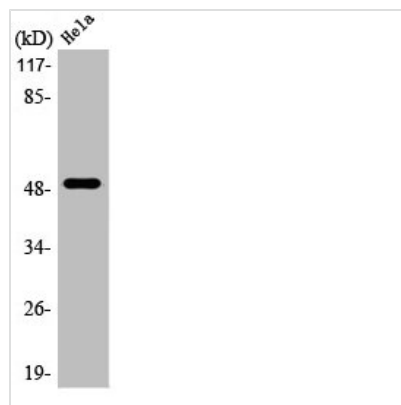




LTBR Antibody

Product Code	CSB-PA003174
Storage	Upon receipt, store at -20°C or -80°C. Avoid repeated freeze.
Uniprot No.	P36941
Immunogen	Synthesized peptide derived from the N-terminal region of Human LTβR.
Raised In	Rabbit
Species Reactivity	Human, Mouse
Tested Applications	WB, IF, ELISA; WB:1:500-1:2000, IF:1:200-1:1000, ELISA:1:40000
Form	Liquid
Conjugate	Non-conjugated
Storage Buffer	Liquid in PBS containing 50% glycerol, 0.5% BSA and 0.02% sodium azide.
Purification Method	The antibody was affinity-purified from rabbit antiserum by affinity-chromatography using epitope-specific immunogen.
Isotype	IgG
Alias	LTBR; D12S370; TNFCR; TNFR3; TNFRSF3; Tumor necrosis factor receptor superfamily member 3; Lymphotoxin-beta receptor; Tumor necrosis factor C receptor; Tumor necrosis factor receptor 2-related protein; Tumor necrosis factor receptor type II
Immunogen Species	Homo sapiens (Human)
Target Names	LTBR

Image



Western Blot analysis of HepG2 cells using LTβR Polyclonal Antibody

Usage For Research Use Only. Not for use in diagnostic or therapeutic procedures.