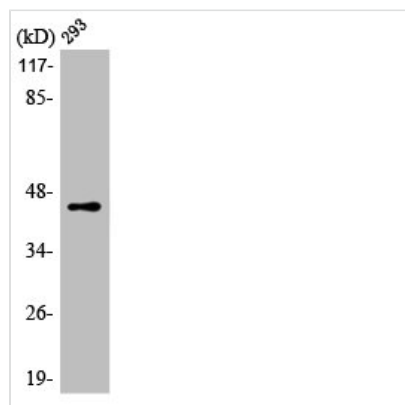




LUC7L2 Antibody

Product Code	CSB-PA003175
Storage	Upon receipt, store at -20°C or -80°C. Avoid repeated freeze.
Uniprot No.	Q9Y383
Immunogen	Synthesized peptide derived from the Internal region of Human LUC7L2.
Raised In	Rabbit
Species Reactivity	Human,Mouse,Rat
Tested Applications	WB, IHC, ELISA; WB:1:500-1:2000, IHC:1:100-1:300, ELISA:1:40000
Form	Liquid
Conjugate	Non-conjugated
Storage Buffer	Liquid in PBS containing 50% glycerol, 0.5% BSA and 0.02% sodium azide.
Purification Method	The antibody was affinity-purified from rabbit antiserum by affinity-chromatography using epitope-specific immunogen.
Isotype	IgG
Alias	LUC7L2; CGI-59; CGI-74; Putative RNA-binding protein Luc7-like 2
Immunogen Species	Homo sapiens (Human)
Target Names	LUC7L2

Image



Western Blot analysis of HuvEc cells using LUC7L2 Polyclonal Antibody