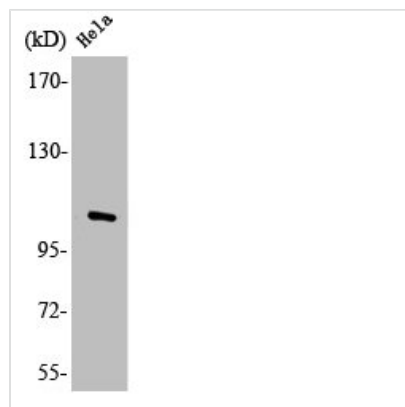




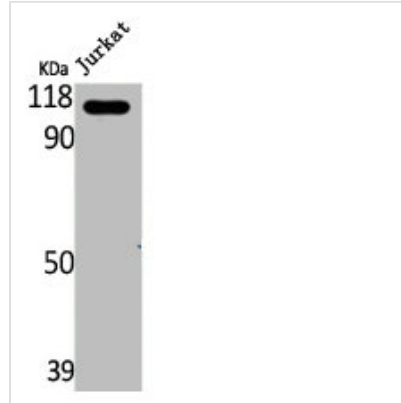
MAP3K13 Antibody

Product Code	CSB-PA003182
Storage	Upon receipt, store at -20°C or -80°C. Avoid repeated freeze.
Uniprot No.	O43283
Immunogen	Synthesized peptide derived from the Internal region of Human LZK.
Raised In	Rabbit
Species Reactivity	Human,Mouse,Rat
Tested Applications	WB, IHC, ELISA; WB:1:500-1:2000, IHC:1:100-1:300, ELISA:1:20000
Form	Liquid
Conjugate	Non-conjugated
Storage Buffer	Liquid in PBS containing 50% glycerol, 0.5% BSA and 0.02% sodium azide.
Purification Method	The antibody was affinity-purified from rabbit antiserum by affinity-chromatography using epitope-specific immunogen.
Isotype	IgG
Alias	MAP3K13; LZK; Mitogen-activated protein kinase kinase kinase 13; Leucine zipper-bearing kinase; Mixed lineage kinase; MLK
Immunogen Species	Homo sapiens (Human)
Target Names	MAP3K13

Image



Western Blot analysis of HepG2 cells using LZK Polyclonal Antibody



Western Blot analysis of Jurkat cells using LZK Polyclonal Antibody

Usage

For Research Use Only. Not for use in diagnostic or therapeutic procedures.