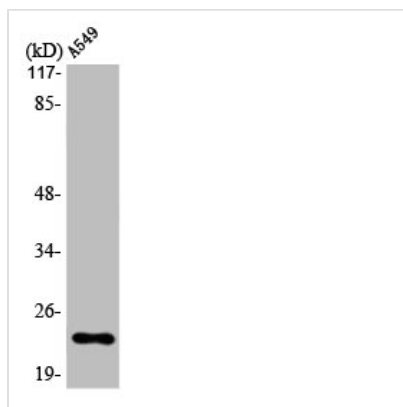




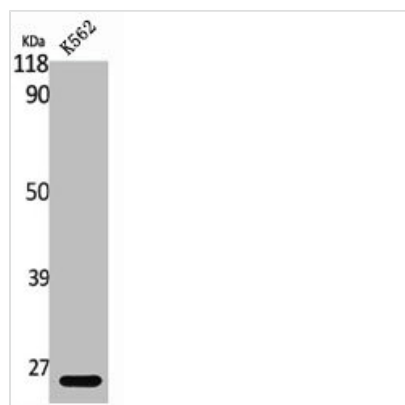
MAD2L1 Antibody

Product Code	CSB-PA003184
Storage	Upon receipt, store at -20°C or -80°C. Avoid repeated freeze.
Uniprot No.	Q13257
Immunogen	Synthesized peptide derived from the Internal region of Human MAD2.
Raised In	Rabbit
Species Reactivity	Human
Tested Applications	WB, ELISA; WB:1:500-1:2000, ELISA:1:5000
Form	Liquid
Conjugate	Non-conjugated
Storage Buffer	Liquid in PBS containing 50% glycerol, 0.5% BSA and 0.02% sodium azide.
Purification Method	The antibody was affinity-purified from rabbit antiserum by affinity-chromatography using epitope-specific immunogen.
Isotype	IgG
Alias	MAD2L1; MAD2; Mitotic spindle assembly checkpoint protein MAD2A; HsMAD2; Mitotic arrest deficient 2-like protein 1; MAD2-like protein 1
Immunogen Species	Homo sapiens (Human)
Target Names	MAD2L1

Image



Western Blot analysis of A549 cells using MAD2 Polyclonal Antibody



Western Blot analysis of K562 cells using MAD2 Polyclonal Antibody