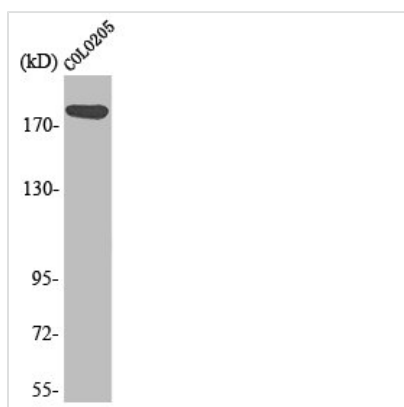




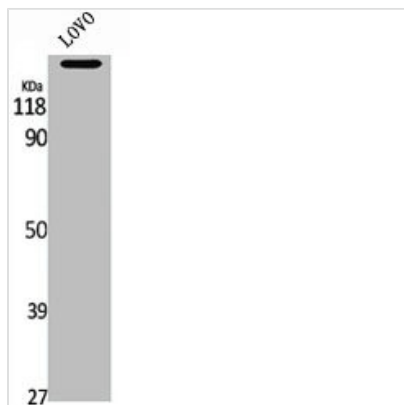
MADD Antibody

Product Code	CSB-PA003185
Storage	Upon receipt, store at -20°C or -80°C. Avoid repeated freeze.
Uniprot No.	Q8WXG6
Immunogen	Synthesized peptide derived from the Internal region of Human MADD.
Raised In	Rabbit
Species Reactivity	Human,Mouse,Rat
Tested Applications	WB, IHC, IF, ELISA; WB:1:500-1:2000, IHC:1:100-1:300, IF:1:200-1:1000, ELISA:1:5000
Form	Liquid
Conjugate	Non-conjugated
Storage Buffer	Liquid in PBS containing 50% glycerol, 0.5% BSA and 0.02% sodium azide.
Purification Method	The antibody was affinity-purified from rabbit antiserum by affinity-chromatography using epitope-specific immunogen.
Isotype	IgG
Alias	MADD; DENN; IG20; KIAA0358; MAP kinase-activating death domain protein; Differentially expressed in normal and neoplastic cells; Insulinoma glucagonoma clone 20; Rab3 GDP/GTP exchange factor
Immunogen Species	Homo sapiens (Human)
Target Names	MADD

Image



Western Blot analysis of Colo205 cells using MADD Polyclonal Antibody



Western Blot analysis of LOVO cells using MADD Polyclonal Antibody

Usage

For Research Use Only. Not for use in diagnostic or therapeutic procedures.