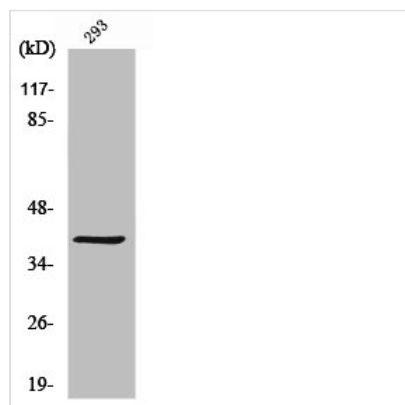




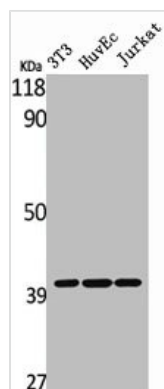
MAGEC2 Antibody

Product Code	CSB-PA003187
Storage	Upon receipt, store at -20°C or -80°C. Avoid repeated freeze.
Uniprot No.	Q9UBF1
Immunogen	Synthesized peptide derived from the Internal region of Human MAGE-C2.
Raised In	Rabbit
Species Reactivity	Human
Tested Applications	WB, ELISA; WB:1:500-1:2000, ELISA:1:5000
Form	Liquid
Conjugate	Non-conjugated
Storage Buffer	Liquid in PBS containing 50% glycerol, 0.5% BSA and 0.02% sodium azide.
Purification Method	The antibody was affinity-purified from rabbit antiserum by affinity-chromatography using epitope-specific immunogen.
Isotype	IgG
Alias	MAGEC2; HCA587; MAGEE1; Melanoma-associated antigen C2; Cancer/testis antigen 10; CT10; Hepatocellular carcinoma-associated antigen 587; MAGE-C2 antigen; MAGE-E1 antigen
Immunogen Species	Homo sapiens (Human)
Target Names	MAGEC2

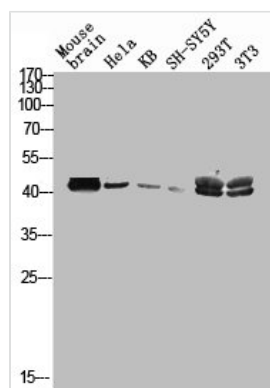
Image



Western Blot analysis of 293 cells using MAGE-C2 Polyclonal Antibody



Western Blot analysis of NIH-3T3 HuvEc Jurkat cells using MAGE-C2 Polyclonal Antibody



Western blot analysis of mouse-brain HELA KB SH-SY5Y 293T 3T3 lysis using MAGE-C2 antibody.