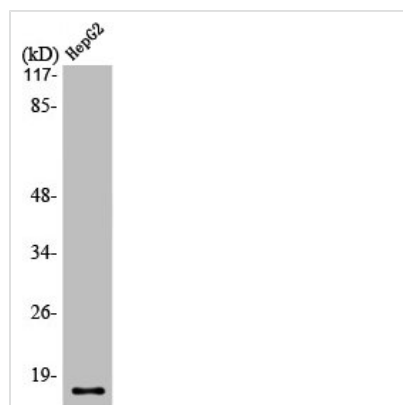




SCGB2A1 Antibody

Product Code	CSB-PA003188
Storage	Upon receipt, store at -20°C or -80°C. Avoid repeated freeze.
Uniprot No.	O75556
Immunogen	Synthesized peptide derived from the N-terminal region of Human Mammaglobin B.
Raised In	Rabbit
Species Reactivity	Human
Tested Applications	WB, IHC, IF, ELISA; WB:1:500-1:2000, IHC:1:100-1:300, IF:1:200-1:1000, ELISA:1:20000
Form	Liquid
Conjugate	Non-conjugated
Storage Buffer	Liquid in PBS containing 50% glycerol, 0.5% BSA and 0.02% sodium azide.
Purification Method	The antibody was affinity-purified from rabbit antiserum by affinity-chromatography using epitope-specific immunogen.
Isotype	IgG
Alias	SCGB2A1; LIPHC; MGB2; UGB3; Mammaglobin-B; Lacryglobin; Lipophilin-C; Mammaglobin-2; Secretoglobin family 2A member 1
Immunogen Species	Homo sapiens (Human)
Target Names	SCGB2A1

Image



Western Blot analysis of HepG2 cells using Mammaglobin B Polyclonal Antibody

Usage For Research Use Only. Not for use in diagnostic or therapeutic procedures.