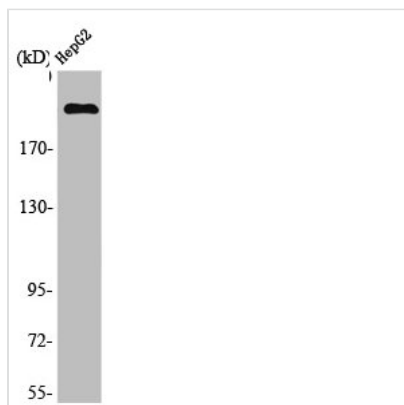




MAST2 Antibody

Product Code	CSB-PA003196
Storage	Upon receipt, store at -20°C or -80°C. Avoid repeated freeze.
Uniprot No.	Q6P0Q8
Immunogen	Synthesized peptide derived from the Internal region of Human MAST205.
Raised In	Rabbit
Species Reactivity	Human, Mouse
Tested Applications	WB, IHC, IF, ELISA; WB:1:500-1:2000, IHC:1:100-1:300, IF:1:200-1:1000, ELISA:1:40000
Form	Liquid
Conjugate	Non-conjugated
Storage Buffer	Liquid in PBS containing 50% glycerol, 0.5% BSA and 0.02% sodium azide.
Purification Method	The antibody was affinity-purified from rabbit antiserum by affinity-chromatography using epitope-specific immunogen.
Isotype	IgG
Alias	MAST2; KIAA0807; MAST205; Microtubule-associated serine/threonine-protein kinase 2
Immunogen Species	Homo sapiens (Human)
Target Names	MAST2

Image



Western Blot analysis of 293 cells using MAST205 Polyclonal Antibody

Usage

For Research Use Only. Not for use in diagnostic or therapeutic procedures.