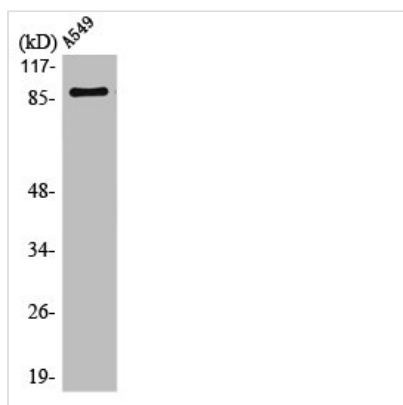




# ST14 Antibody

<b>Product Code</b>	CSB-PA003199
<b>Storage</b>	Upon receipt, store at -20°C or -80°C. Avoid repeated freeze.
<b>Uniprot No.</b>	Q9Y5Y6
<b>Immunogen</b>	Synthesized peptide derived from the N-terminal region of Human Matriptase.
<b>Raised In</b>	Rabbit
<b>Species Reactivity</b>	Human
<b>Tested Applications</b>	WB, IF, ELISA; WB:1:500-1:2000, IF:1:200-1:1000, ELISA:1:10000
<b>Form</b>	Liquid
<b>Conjugate</b>	Non-conjugated
<b>Storage Buffer</b>	Liquid in PBS containing 50% glycerol, 0.5% BSA and 0.02% sodium azide.
<b>Purification Method</b>	The antibody was affinity-purified from rabbit antiserum by affinity-chromatography using epitope-specific immunogen.
<b>Isotype</b>	IgG
<b>Alias</b>	ST14; PRSS14; SNC19; TADG15; Suppressor of tumorigenicity 14 protein; Matriptase; Membrane-type serine protease 1; MT-SP1; Prostamin; Serine protease 14; Serine protease TADG-15; Tumor-associated differentially-expressed gene 15 protein
<b>Immunogen Species</b>	Homo sapiens (Human)
<b>Target Names</b>	ST14

## Image



Western Blot analysis of A549 cells using Matriptase Polyclonal Antibody

**Usage** For Research Use Only. Not for use in diagnostic or therapeutic procedures.