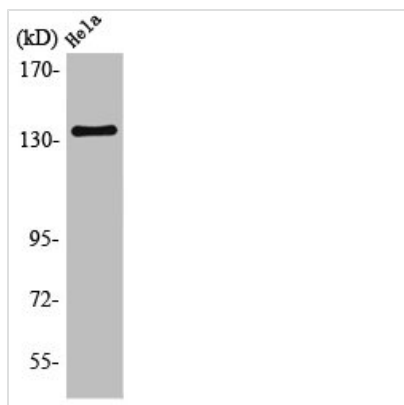




KCNMA1 Antibody

Product Code	CSB-PA003200
Storage	Upon receipt, store at -20°C or -80°C. Avoid repeated freeze.
Uniprot No.	Q12791
Immunogen	Synthesized peptide derived from the Internal region of Human MaxiK α .
Raised In	Rabbit
Species Reactivity	Human,Mouse,Rat
Tested Applications	WB, IHC, ELISA; WB:1:500-1:2000, IHC:1:100-1:300, ELISA:1:40000
Form	Liquid
Conjugate	Non-conjugated
Storage Buffer	Liquid in PBS containing 50% glycerol, 0.5% BSA and 0.02% sodium azide.
Purification Method	The antibody was affinity-purified from rabbit antiserum by affinity-chromatography using epitope-specific immunogen.
Isotype	IgG
Alias	KCNMA1; KCNMA; SLO; Calcium-activated potassium channel subunit alpha-1; BK channel; BKCA alpha; Calcium-activated potassium channel; subfamily M subunit alpha-1; K(VCA)alpha; KCa1.1; Maxi K channel; MaxiK; Slo-alpha; Slo1; Slowpoke homolog
Immunogen Species	Homo sapiens (Human)
Target Names	KCNMA1

Image



Western Blot analysis of HeLa cells using MaxiK α Polyclonal Antibody

Usage For Research Use Only. Not for use in diagnostic or therapeutic procedures.