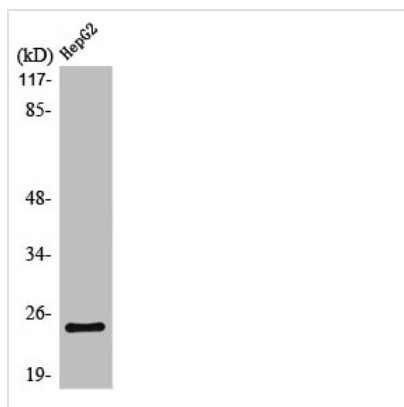




KCNMB4 Antibody

| | |
|----------------------------|--|
| Product Code | CSB-PA003201 |
| Storage | Upon receipt, store at -20°C or -80°C. Avoid repeated freeze. |
| Uniprot No. | Q86W47 |
| Immunogen | Synthesized peptide derived from the Internal region of Human MaxiK β . |
| Raised In | Rabbit |
| Species Reactivity | Human,Mouse,Rat |
| Tested Applications | WB, IHC, ELISA; WB:1:500-1:2000, IHC:1:100-1:300, ELISA:1:20000 |
| Form | Liquid |
| Conjugate | Non-conjugated |
| Storage Buffer | Liquid in PBS containing 50% glycerol, 0.5% BSA and 0.02% sodium azide. |
| Purification Method | The antibody was affinity-purified from rabbit antiserum by affinity-chromatography using epitope-specific immunogen. |
| Isotype | IgG |
| Alias | KCNMB4; Calcium-activated potassium channel subunit beta-4; BK channel subunit beta-4; BKbeta4; Hbeta4; Calcium-activated potassium channel; subfamily M subunit beta-4; Charybdotoxin receptor subunit beta-4; K(VCA)beta-4; Maxi K channel sub |
| Immunogen Species | Homo sapiens (Human) |
| Target Names | KCNMB4 |

Image



Western Blot analysis of HepG2 cells using MaxiK β Polyclonal Antibody

Usage

For Research Use Only. Not for use in diagnostic or therapeutic procedures.