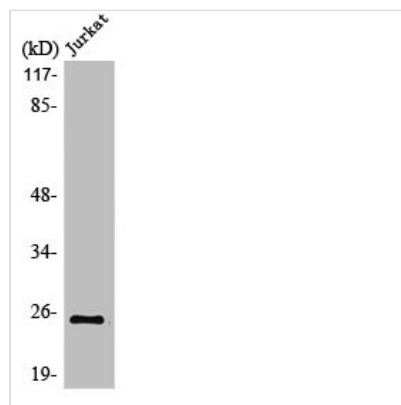




MDFI Antibody

Product Code	CSB-PA003210
Storage	Upon receipt, store at -20°C or -80°C. Avoid repeated freeze.
Uniprot No.	Q99750
Immunogen	Synthesized peptide derived from the Internal region of Human MDFI.
Raised In	Rabbit
Species Reactivity	Human, Mouse
Tested Applications	WB, ELISA; WB:1:500-1:2000, ELISA:1:10000
Form	Liquid
Conjugate	Non-conjugated
Storage Buffer	Liquid in PBS containing 50% glycerol, 0.5% BSA and 0.02% sodium azide.
Purification Method	The antibody was affinity-purified from rabbit antiserum by affinity-chromatography using epitope-specific immunogen.
Isotype	IgG
Alias	MDFI; MyoD family inhibitor; Myogenic repressor I-mf
Immunogen Species	Homo sapiens (Human)
Target Names	MDFI

Image



Western Blot analysis of Jurkat cells using MDFI Polyclonal Antibody

Usage

For Research Use Only. Not for use in diagnostic or therapeutic procedures.