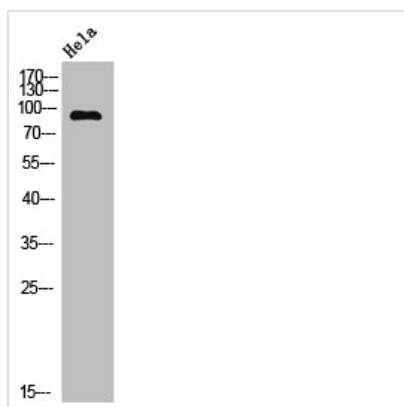




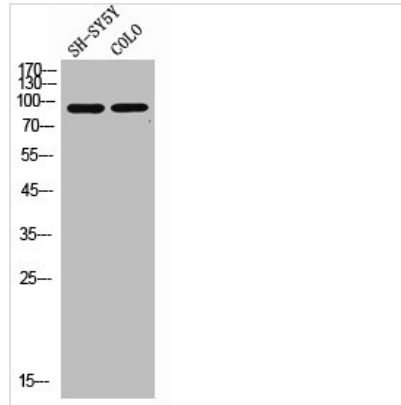
MDM2 Antibody

Product Code	CSB-PA003212
Storage	Upon receipt, store at -20°C or -80°C. Avoid repeated freeze.
Uniprot No.	Q00987
Immunogen	Synthesized peptide derived from Human MDM2 around the non-phosphorylation site of S166.
Raised In	Rabbit
Species Reactivity	Human, Mouse, Monkey
Tested Applications	WB, IHC, IF, ELISA; WB:1:500-1:2000, IHC:1:100-1:300, IF:1:200-1:1000, ELISA:1:5000
Form	Liquid
Conjugate	Non-conjugated
Storage Buffer	Liquid in PBS containing 50% glycerol, 0.5% BSA and 0.02% sodium azide.
Purification Method	The antibody was affinity-purified from rabbit antiserum by affinity-chromatography using epitope-specific immunogen.
Isotype	IgG
Alias	MDM2; E3 ubiquitin-protein ligase Mdm2; Double minute 2 protein; Hdm2; Oncoprotein Mdm2; p53-binding protein Mdm2
Immunogen Species	Homo sapiens (Human)
Target Names	MDM2

Image



Western Blot analysis of HeLa cells using MDM2 Polyclonal Antibody



Western Blot analysis of COLO SH-SY5Y cells using MDM2 Polyclonal Antibody

Usage

For Research Use Only. Not for use in diagnostic or therapeutic procedures.