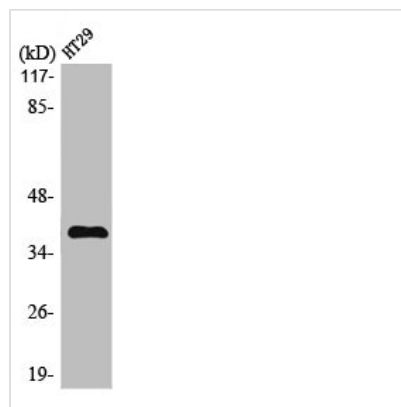




MEF2B Antibody

Product Code	CSB-PA003215
Storage	Upon receipt, store at -20°C or -80°C. Avoid repeated freeze.
Uniprot No.	Q02080
Immunogen	Synthesized peptide derived from the Internal region of Human MEF-2B.
Raised In	Rabbit
Species Reactivity	Human, Mouse
Tested Applications	WB, IHC, ELISA; WB:1:500-1:2000, IHC:1:100-1:300, ELISA:1:10000
Form	Liquid
Conjugate	Non-conjugated
Storage Buffer	Liquid in PBS containing 50% glycerol, 0.5% BSA and 0.02% sodium azide.
Purification Method	The antibody was affinity-purified from rabbit antiserum by affinity-chromatography using epitope-specific immunogen.
Isotype	IgG
Alias	MEF2B; XMEF2; Myocyte-specific enhancer factor 2B; RSRFR2; Serum response factor-like protein 2
Immunogen Species	Homo sapiens (Human)
Target Names	MEF2B

Image



Western Blot analysis of HT29 cells using MEF-2B Polyclonal Antibody

Usage

For Research Use Only. Not for use in diagnostic or therapeutic procedures.