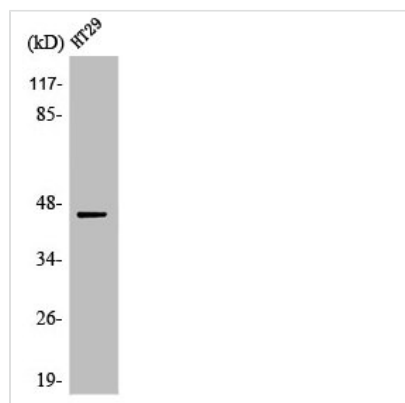




# MAP2K1/MAP2K2 Antibody

<b>Product Code</b>	CSB-PA003221
<b>Storage</b>	Upon receipt, store at -20°C or -80°C. Avoid repeated freeze.
<b>Uniprot No.</b>	Q02750/P36507
<b>Immunogen</b>	Synthesized peptide derived from Human MEK-1/2 around the non-phosphorylation site of S218/222.
<b>Raised In</b>	Rabbit
<b>Species Reactivity</b>	Human,Mouse,Rat,Monkey
<b>Tested Applications</b>	WB, ELISA; WB:1:500-1:2000, ELISA:1:20000
<b>Form</b>	Liquid
<b>Conjugate</b>	Non-conjugated
<b>Storage Buffer</b>	Liquid in PBS containing 50% glycerol, 0.5% BSA and 0.02% sodium azide.
<b>Purification Method</b>	The antibody was affinity-purified from rabbit antiserum by affinity-chromatography using epitope-specific immunogen.
<b>Isotype</b>	IgG
<b>Alias</b>	MAP2K1; MEK1; PRKMK1; Dual specificity mitogen-activated protein kinase kinase 1; MAP kinase kinase 1; MAPKK 1; MKK1; ERK activator kinase 1; MAPK/ERK kinase 1; MEK 1; MAP2K2; MEK2; MKK2; PRKMK2; Dual specificity mitogen-activated protein k
<b>Immunogen Species</b>	Homo sapiens (Human)
<b>Target Names</b>	MAP2K1/MAP2K2

## Image



Western Blot analysis of COS7 cells using MEK-1/2 Polyclonal Antibody