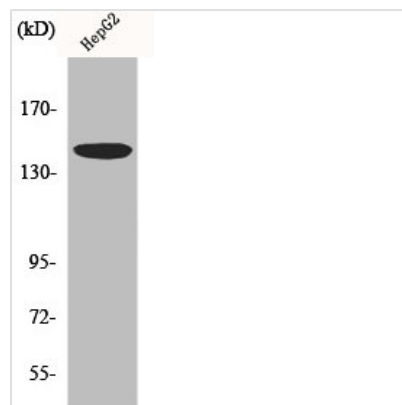




MET Antibody

Product Code	CSB-PA003232
Storage	Upon receipt, store at -20°C or -80°C. Avoid repeated freeze.
Uniprot No.	P08581
Immunogen	Synthesized peptide derived from Human Met around the non-phosphorylation site of Y1003.
Raised In	Rabbit
Species Reactivity	Human,Mouse,Rat
Tested Applications	WB, IF, ELISA; WB:1:500-1:2000, IF:1:200-1:1000, ELISA:1:5000
Form	Liquid
Conjugate	Non-conjugated
Storage Buffer	Liquid in PBS containing 50% glycerol, 0.5% BSA and 0.02% sodium azide.
Purification Method	The antibody was affinity-purified from rabbit antiserum by affinity-chromatography using epitope-specific immunogen.
Isotype	IgG
Alias	MET; Hepatocyte growth factor receptor; HGF receptor; HGF/SF receptor; Proto-oncogene c-Met; Scatter factor receptor; SF receptor; Tyrosine-protein kinase Met
Immunogen Species	Homo sapiens (Human)
Target Names	MET

Image



Western Blot analysis of HepG2 cells using Met Polyclonal Antibody

Usage

For Research Use Only. Not for use in diagnostic or therapeutic procedures.