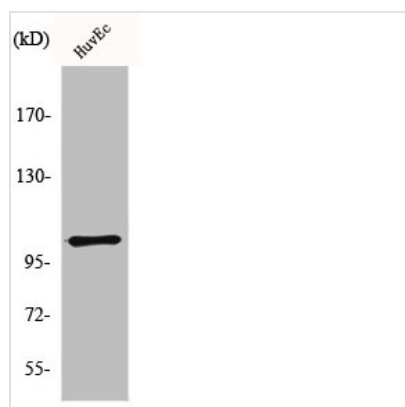




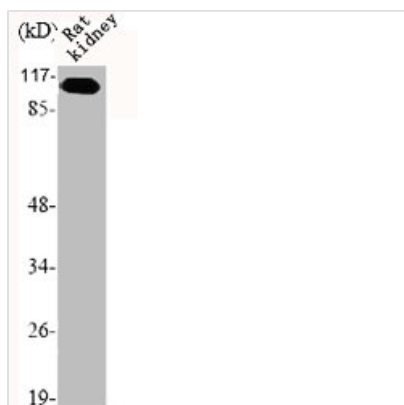
GRM7 Antibody

Product Code	CSB-PA003237
Storage	Upon receipt, store at -20°C or -80°C. Avoid repeated freeze.
Uniprot No.	Q14831
Immunogen	Synthesized peptide derived from the C-terminal region of Human mGluR-7.
Raised In	Rabbit
Species Reactivity	Human,Mouse,Rat
Tested Applications	WB, IHC, IF, ELISA; WB:1:500-1:2000, IHC:1:100-1:300, IF:1:200-1:1000, ELISA:1:20000
Form	Liquid
Conjugate	Non-conjugated
Storage Buffer	Liquid in PBS containing 50% glycerol, 0.5% BSA and 0.02% sodium azide.
Purification Method	The antibody was affinity-purified from rabbit antiserum by affinity-chromatography using epitope-specific immunogen.
Isotype	IgG
Alias	GRM7; GPRC1G; MGLUR7; Metabotropic glutamate receptor 7; mGluR7
Immunogen Species	Homo sapiens (Human)
Target Names	GRM7

Image



Western Blot analysis of HuvEc cells using mGluR-7 Polyclonal Antibody



Western Blot analysis of RAT-KIDNEY cells using mGluR-7 Polyclonal Antibody