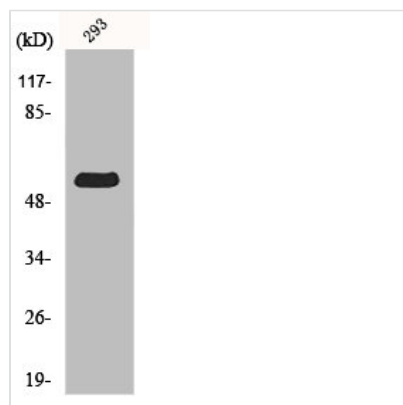




MINPP1 Antibody

Product Code	CSB-PA003242
Storage	Upon receipt, store at -20°C or -80°C. Avoid repeated freeze.
Uniprot No.	Q9UNW1
Immunogen	Synthesized peptide derived from the Internal region of Human MIPP.
Raised In	Rabbit
Species Reactivity	Human, Mouse, Rat
Tested Applications	WB, IHC, ELISA; WB:1:500-1:2000, IHC:1:100-1:300, ELISA:1:10000
Form	Liquid
Conjugate	Non-conjugated
Storage Buffer	Liquid in PBS containing 50% glycerol, 0.5% BSA and 0.02% sodium azide.
Purification Method	The antibody was affinity-purified from rabbit antiserum by affinity-chromatography using epitope-specific immunogen.
Isotype	IgG
Alias	MINPP1; MIPP; Multiple inositol polyphosphate phosphatase 1; 2; 3-bisphosphoglycerate 3-phosphatase; 2,3-BPG phosphatase; Inositol; 1,3,4,5)-tetrakisphosphate 3-phosphatase; Ins(1,3,4,5)P(4) 3-phosphatase
Immunogen Species	Homo sapiens (Human)
Target Names	MINPP1

Image



Western Blot analysis of 293 cells using MIPP Polyclonal Antibody

Usage For Research Use Only. Not for use in diagnostic or therapeutic procedures.