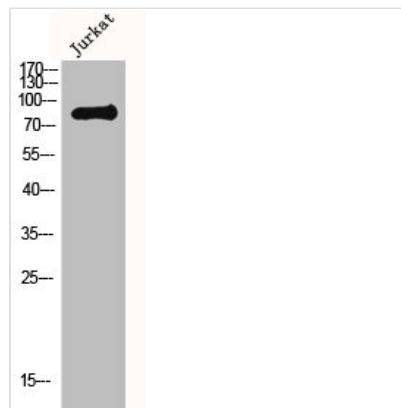




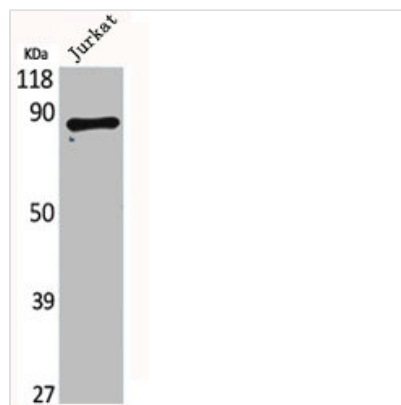
MLH1 Antibody

Product Code	CSB-PA003247
Storage	Upon receipt, store at -20°C or -80°C. Avoid repeated freeze.
Uniprot No.	P40692
Immunogen	Synthesized peptide derived from the Internal region of Human MLH1.
Raised In	Rabbit
Species Reactivity	Human,Mouse,Rat
Tested Applications	WB, IF, ELISA; WB:1:500-1:2000, IF:1:200-1:1000, ELISA:1:20000
Form	Liquid
Conjugate	Non-conjugated
Storage Buffer	Liquid in PBS containing 50% glycerol, 0.5% BSA and 0.02% sodium azide.
Purification Method	The antibody was affinity-purified from rabbit antiserum by affinity-chromatography using epitope-specific immunogen.
Isotype	IgG
Alias	MLH1; COCA2; DNA mismatch repair protein Mlh1; MutL protein homolog 1
Immunogen Species	Homo sapiens (Human)
Target Names	MLH1

Image



Western Blot analysis of Jurkat cells using MLH1 Polyclonal Antibody



Western Blot analysis of Jurkat cells using MLH1 Polyclonal Antibody



Usage

For Research Use Only. Not for use in diagnostic or therapeutic procedures.