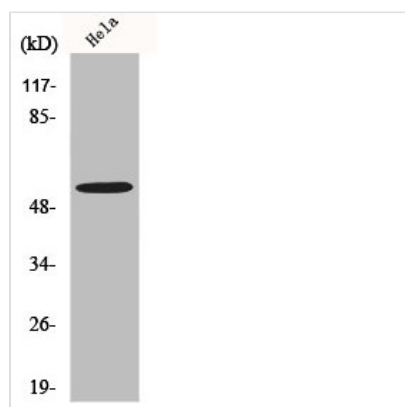




MLKL Antibody

Product Code	CSB-PA003250
Storage	Upon receipt, store at -20°C or -80°C. Avoid repeated freeze.
Uniprot No.	Q8NB16
Immunogen	Synthesized peptide derived from the N-terminal region of Human MLKL.
Raised In	Rabbit
Species Reactivity	Human
Tested Applications	WB, ELISA; WB:1:500-1:2000, ELISA:1:20000
Form	Liquid
Conjugate	Non-conjugated
Storage Buffer	Liquid in PBS containing 50% glycerol, 0.5% BSA and 0.02% sodium azide.
Purification Method	The antibody was affinity-purified from rabbit antiserum by affinity-chromatography using epitope-specific immunogen.
Isotype	IgG
Alias	MLKL; Mixed lineage kinase domain-like protein
Immunogen Species	Homo sapiens (Human)
Target Names	MLKL

Image



Western Blot analysis of K562 cells using MLKL Polyclonal Antibody

Usage

For Research Use Only. Not for use in diagnostic or therapeutic procedures.