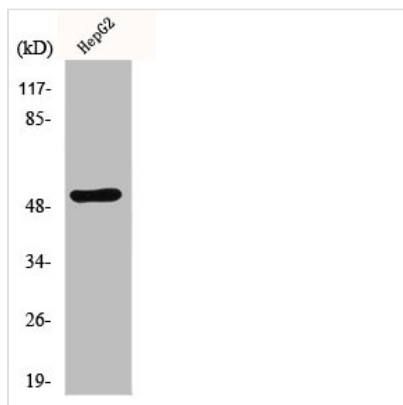




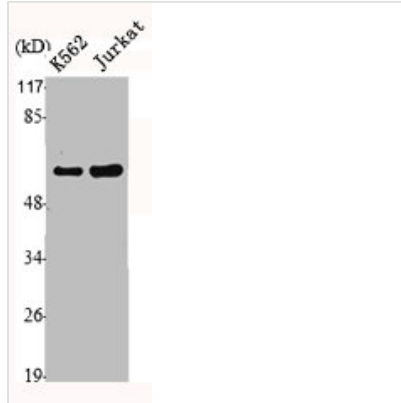
MMP1 Antibody

Product Code	CSB-PA003252
Storage	Upon receipt, store at -20°C or -80°C. Avoid repeated freeze.
Uniprot No.	P03956
Immunogen	Synthesized peptide derived from the C-terminal region of Human MMP-1.
Raised In	Rabbit
Species Reactivity	Human
Tested Applications	WB, IHC, IF, ELISA; WB:1:500-1:2000, IHC:1:100-1:300, IF:1:200-1:1000, ELISA:1:20000
Form	Liquid
Conjugate	Non-conjugated
Storage Buffer	Liquid in PBS containing 50% glycerol, 0.5% BSA and 0.02% sodium azide.
Purification Method	The antibody was affinity-purified from rabbit antiserum by affinity-chromatography using epitope-specific immunogen.
Isotype	IgG
Alias	MMP1; CLG; Interstitial collagenase; Fibroblast collagenase; Matrix metalloproteinase-1; MMP-1
Immunogen Species	Homo sapiens (Human)
Target Names	MMP1

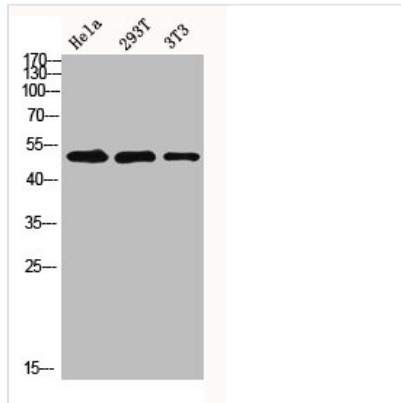
Image



Western Blot analysis of HepG2 cells using MMP-1 Polyclonal Antibody



Western Blot analysis of Jurkat K562 cells using MMP-1 Polyclonal Antibody



Western blot analysis of HELA 293T 3T3 lysis using MMP-1 antibody.

Usage

For Research Use Only. Not for use in diagnostic or therapeutic procedures.