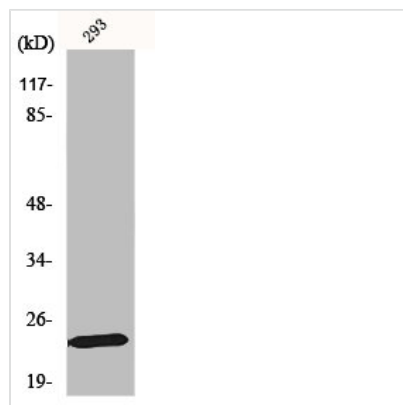




MOB1B Antibody

Product Code	CSB-PA003262
Storage	Upon receipt, store at -20°C or -80°C. Avoid repeated freeze.
Uniprot No.	Q7L9L4
Immunogen	Synthesized peptide derived from the Internal region of Human Mob1A.
Raised In	Rabbit
Species Reactivity	Human,Mouse,Monkey
Tested Applications	WB, IHC, ELISA; WB:1:500-1:2000, IHC:1:100-1:300, ELISA:1:40000
Form	Liquid
Conjugate	Non-conjugated
Storage Buffer	Liquid in PBS containing 50% glycerol, 0.5% BSA and 0.02% sodium azide.
Purification Method	The antibody was affinity-purified from rabbit antiserum by affinity-chromatography using epitope-specific immunogen.
Isotype	IgG
Alias	MOB1B; MOB4A; MOBKL1A; MOB kinase activator 1B; Mob1 homolog 1A; Mob1A; Mob1B; Mps one binder kinase activator-like 1A
Immunogen Species	Homo sapiens (Human)
Target Names	MOB1B

Image



Western Blot analysis of 293 cells using Mob1A Polyclonal Antibody