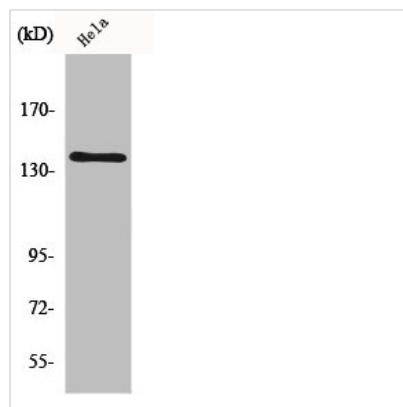




MOV10L1 Antibody

Product Code	CSB-PA003266
Storage	Upon receipt, store at -20°C or -80°C. Avoid repeated freeze.
Uniprot No.	Q9BXT6
Immunogen	Synthesized peptide derived from the Internal region of Human MOV10L1.
Raised In	Rabbit
Species Reactivity	Human
Tested Applications	WB, IHC, ELISA; WB:1:500-1:2000, IHC:1:100-1:300, ELISA:1:5000
Form	Liquid
Conjugate	Non-conjugated
Storage Buffer	Liquid in PBS containing 50% glycerol, 0.5% BSA and 0.02% sodium azide.
Purification Method	The antibody was affinity-purified from rabbit antiserum by affinity-chromatography using epitope-specific immunogen.
Isotype	IgG
Alias	MOV10L1; Putative helicase Mov10l1; Moloney leukemia virus 10-like protein 1; MOV10-like protein 1
Immunogen Species	Homo sapiens (Human)
Target Names	MOV10L1

Image



Western Blot analysis of RAW264.7 cells using MOV10L1 Polyclonal Antibody

Usage

For Research Use Only. Not for use in diagnostic or therapeutic procedures.