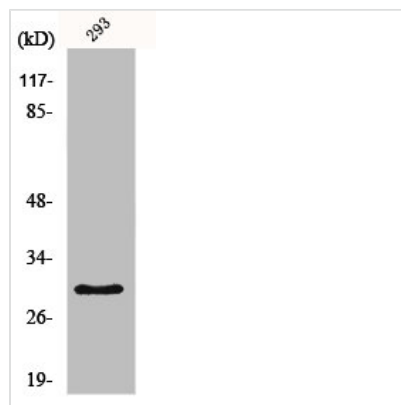




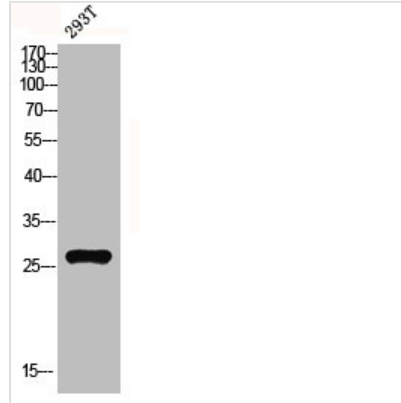
MRPL10 Antibody

Product Code	CSB-PA003283
Storage	Upon receipt, store at -20°C or -80°C. Avoid repeated freeze.
Uniprot No.	Q7Z7H8
Immunogen	Synthesized peptide derived from the C-terminal region of Human MRP-L10.
Raised In	Rabbit
Species Reactivity	Human
Tested Applications	WB, IHC, ELISA; WB:1:500-1:2000, IHC:1:100-1:300, ELISA:1:20000
Form	Liquid
Conjugate	Non-conjugated
Storage Buffer	Liquid in PBS containing 50% glycerol, 0.5% BSA and 0.02% sodium azide.
Purification Method	The antibody was affinity-purified from rabbit antiserum by affinity-chromatography using epitope-specific immunogen.
Isotype	IgG
Alias	MRPL10; MRPL8; RPML8; 39S ribosomal protein L10; mitochondrial; L10mt; MRP-L10; 39S ribosomal protein L8, mitochondrial; L8mt; MRP-L8
Immunogen Species	Homo sapiens (Human)
Target Names	MRPL10

Image



Western Blot analysis of COLO205 cells using MRP-L10 Polyclonal Antibody



Western blot analysis of 293T lysis using MRP-L10 antibody.

Usage

For Research Use Only. Not for use in diagnostic or therapeutic procedures.